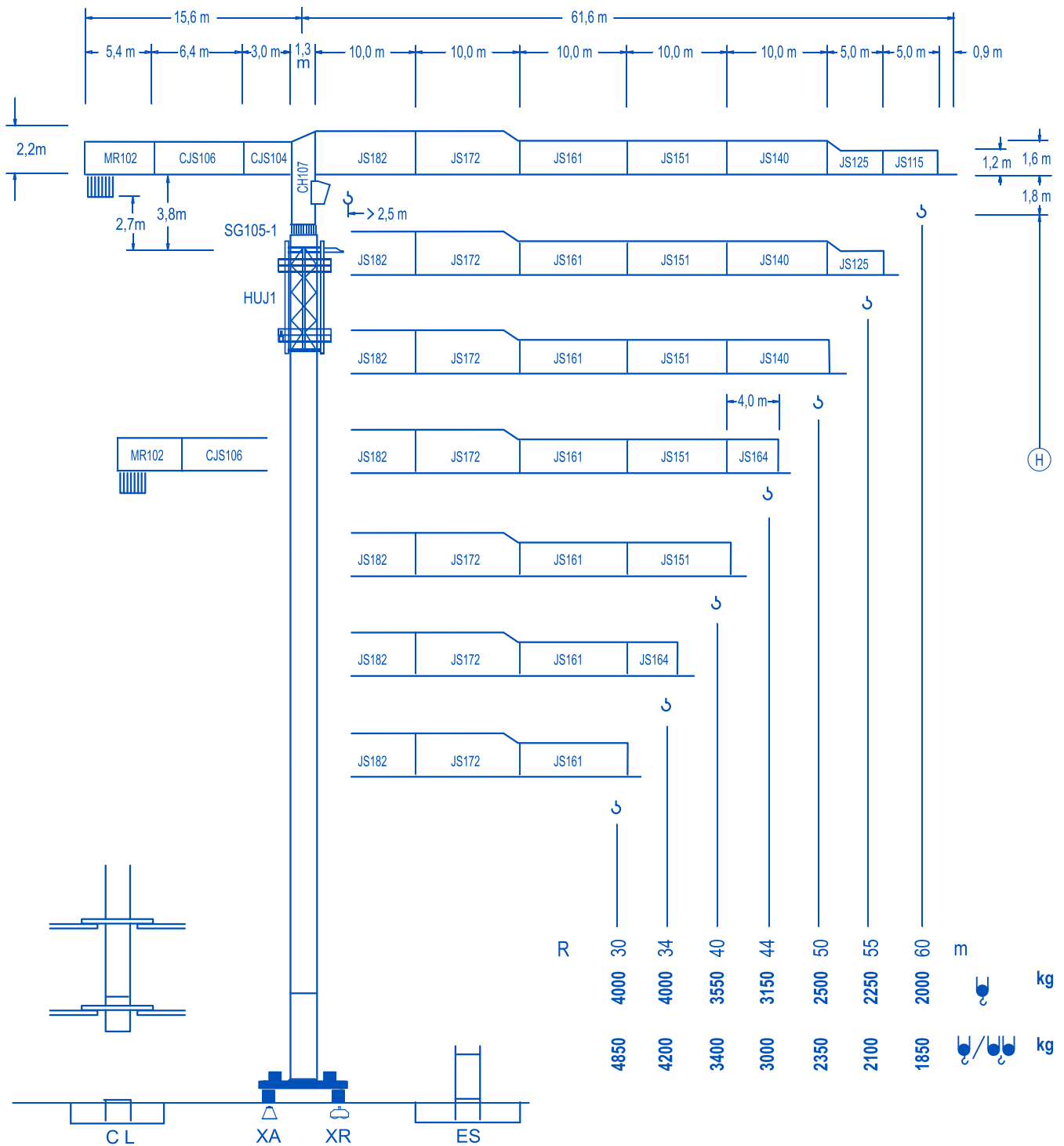
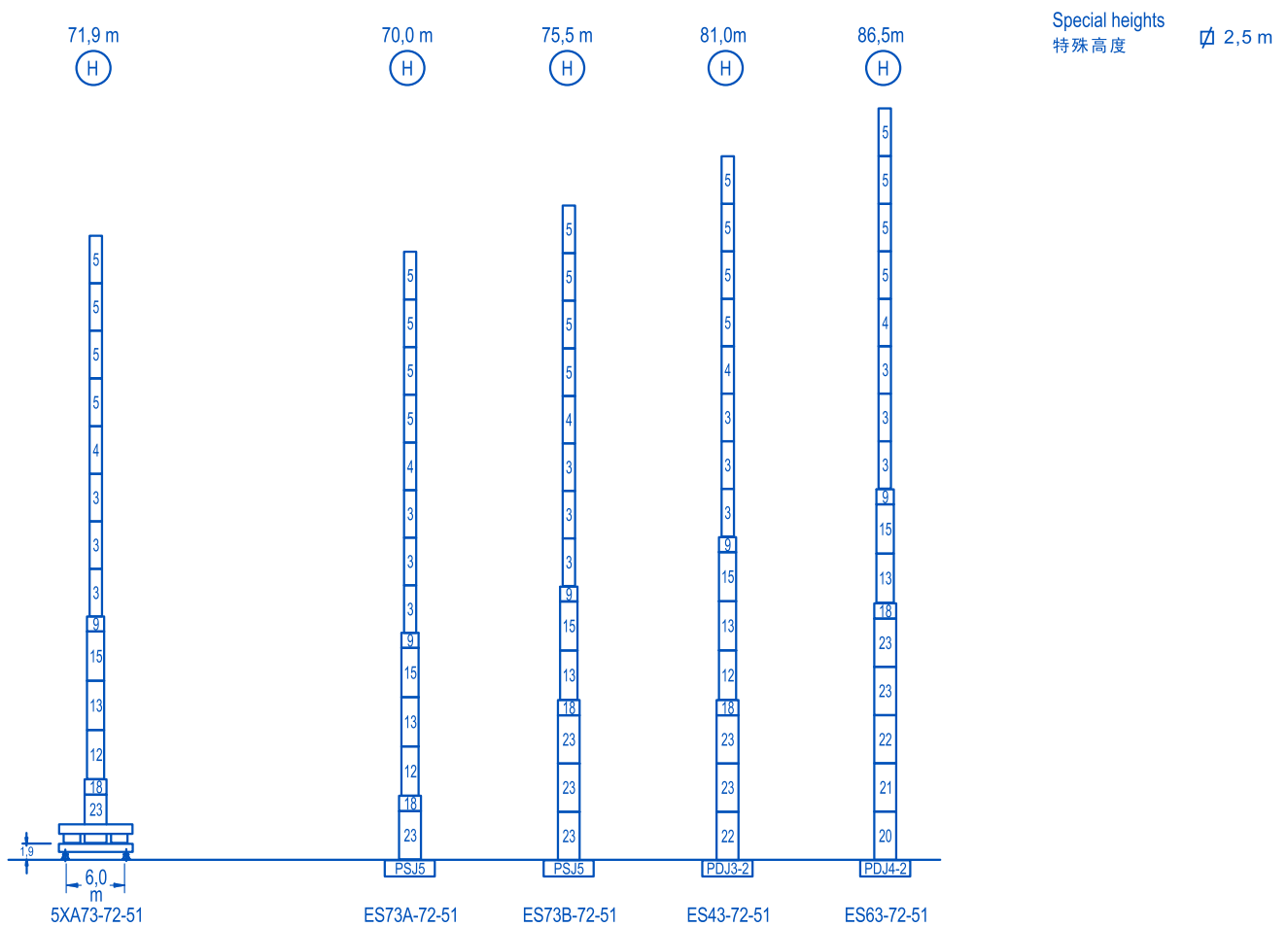
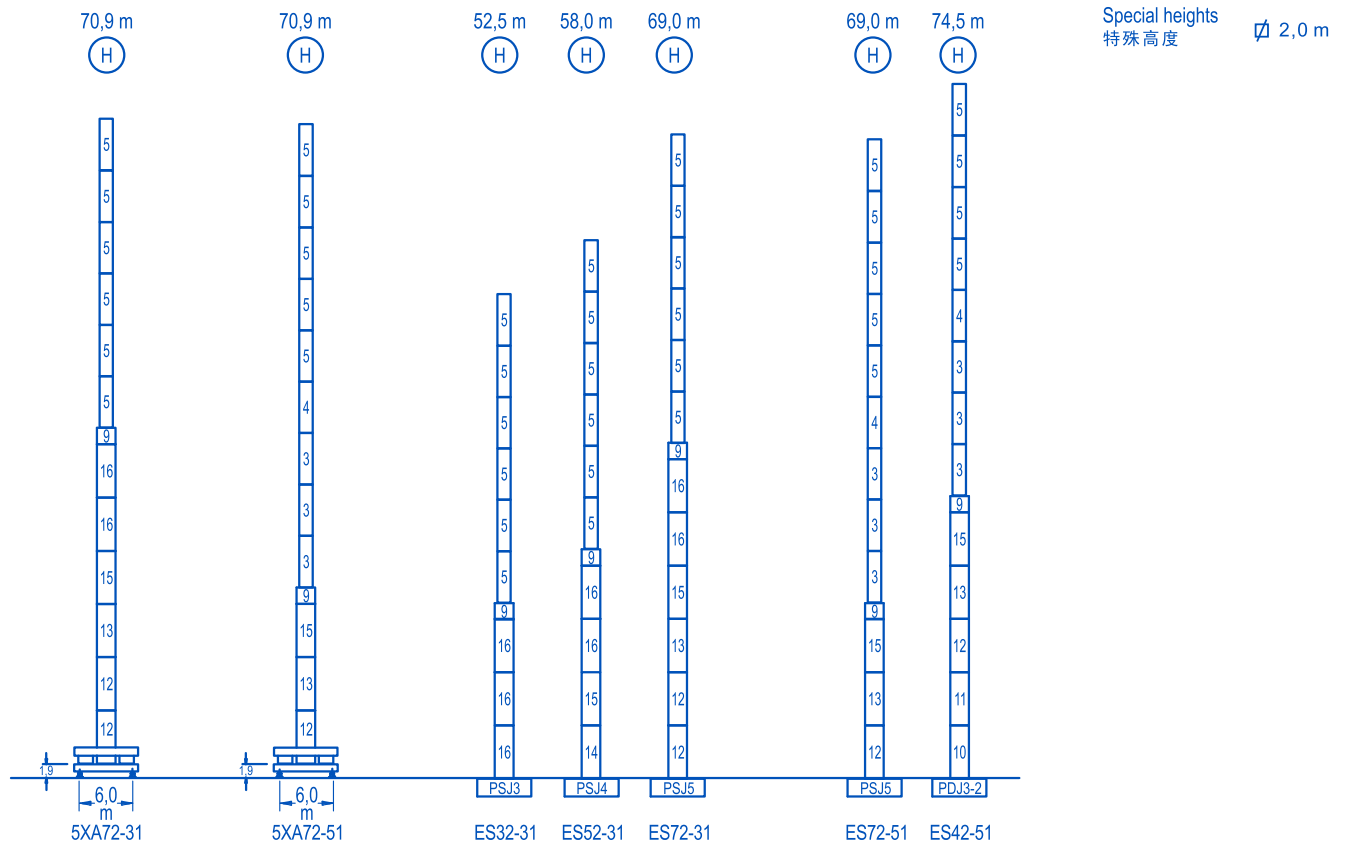


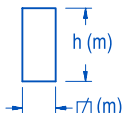
LINDEN 1000

10 CJ 140


8 t








	N°	Ref.	\varnothing	h	N°	Ref.	\varnothing	h	N°	Ref.	\varnothing	h	N°	Ref.	\varnothing	h
	3	SJ14	1,6	5,5	10	DJ23	2,0	5,5	14	SJ24	2,0	5,5	20	TDJ34	2,5	5,5
	4	TSJ14	1,6	5,5	11	TDJ23A	2,0	5,5	15	TSJ24	2,0	5,5	21	DJ33	2,5	5,5
	5	SJ13	1,6	5,5	12	SJ25	2,0	5,5	16	SJ23	2,0	5,5	22	TDJ33A	2,5	5,5
	9	TMSJ23	2,0	1,0	13	TSJ25	2,0	5,5	18	TMSJ35	2,5	1,0	23	SJ35	2,5	5,5

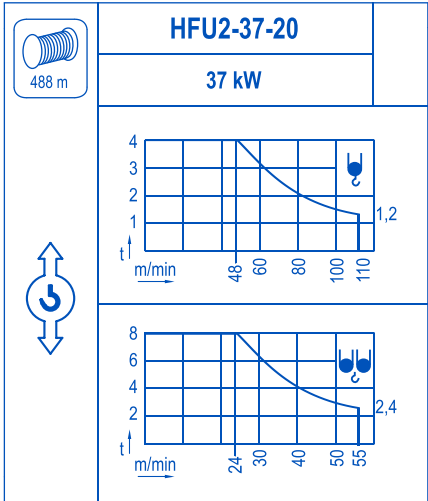
Other wind zones or additional hook heights on request
其他风区或另外的吊钩高度请咨询

	TFU-4.0
	4 kW
0 ⇄ 66 m/min	

	SWR-7.5
	2 x 75 Nm
0 ⇄ 0,7 rpm	

	TS2-5.5	RT-7.5
	2 x 55 Nm	2 x 75 Nm
	0 ⇄ 20 m/min	
	1XR31 3XR51	5XR71

	RT-7.5VC
	2 x 75 Nm
	0 ⇄ 20 m/min
	5XR71



POWER / 功率				Operating voltage / 工作电压	Generator / 发电机
Hoist / 起升机构	Trolley / 变幅机构	Slewing / 回转机构	Travel / 行走机构		
HFU2-37-20	TFU-4.0	(2x) SWR-7.5	(2x) TS2-5.5 (2x) RT-7.5	380 V 3ph 50 Hz	110 KVA

Optional 选项